



COVID-19 Pulse Staff Focus Groups

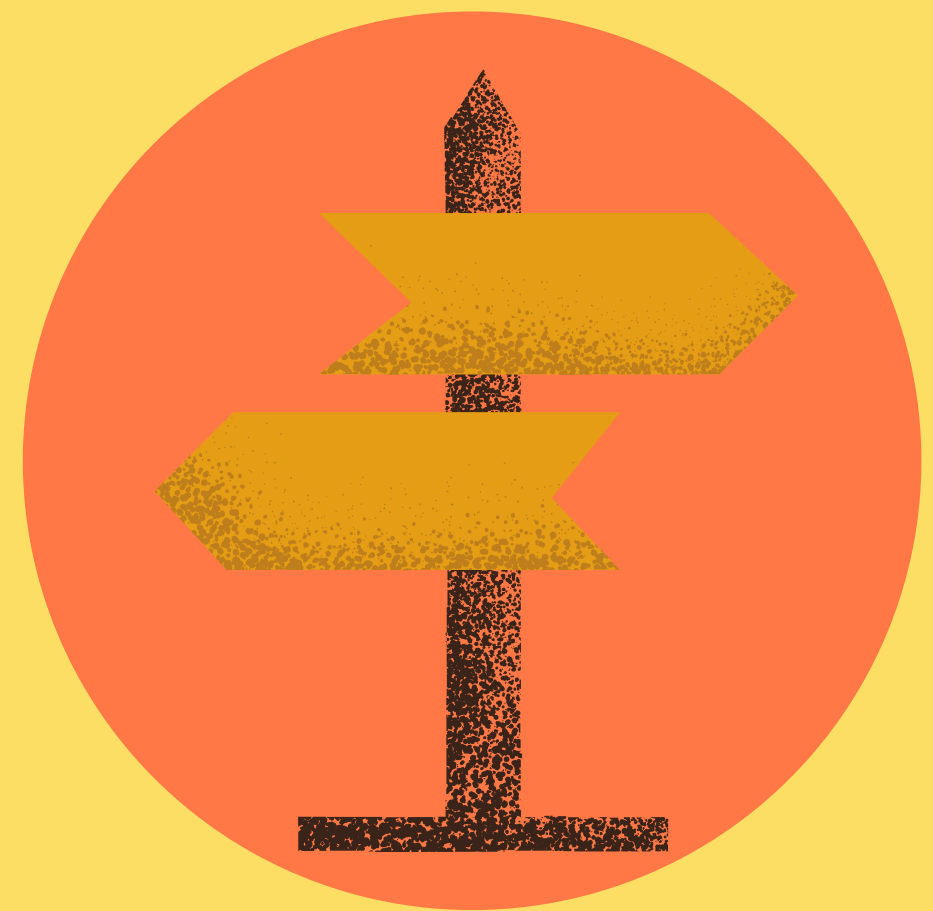


Decision Making

Increased involvement in decision making during the initial Covid-19 period.....



Staff felt their **expertise and experience was acknowledged.**



'Crisis management' led to more **streamlined and efficient decision-making processes.**

Staff Suggestions for Improvement.....



Consult, Collaborate & Feedback

Local supervisors/Line managers to provide **platforms** to allow staff to **voice their opinions** and give **feedback on performance** through performance achievement discussions



Team Decisions

Support decision making in teams to **increase staff contribution** and **maximise staff skills**